



**350 Montacute Road ROSTREVOR SA**

5 1 2

Land: 602m2 19.1m x 30.4m.

This is an opportunity to purchase a 5 bedroom home in a wonderful location, in Rostrevor. At the top end of Montacute Road surrounded by other quality homes this home certainly will suit family buyers seeking a home in this marvellous location.

The home includes very good sized living areas, 2 dining areas, 5 bedrooms, excellent bathroom, kitchen and laundry.

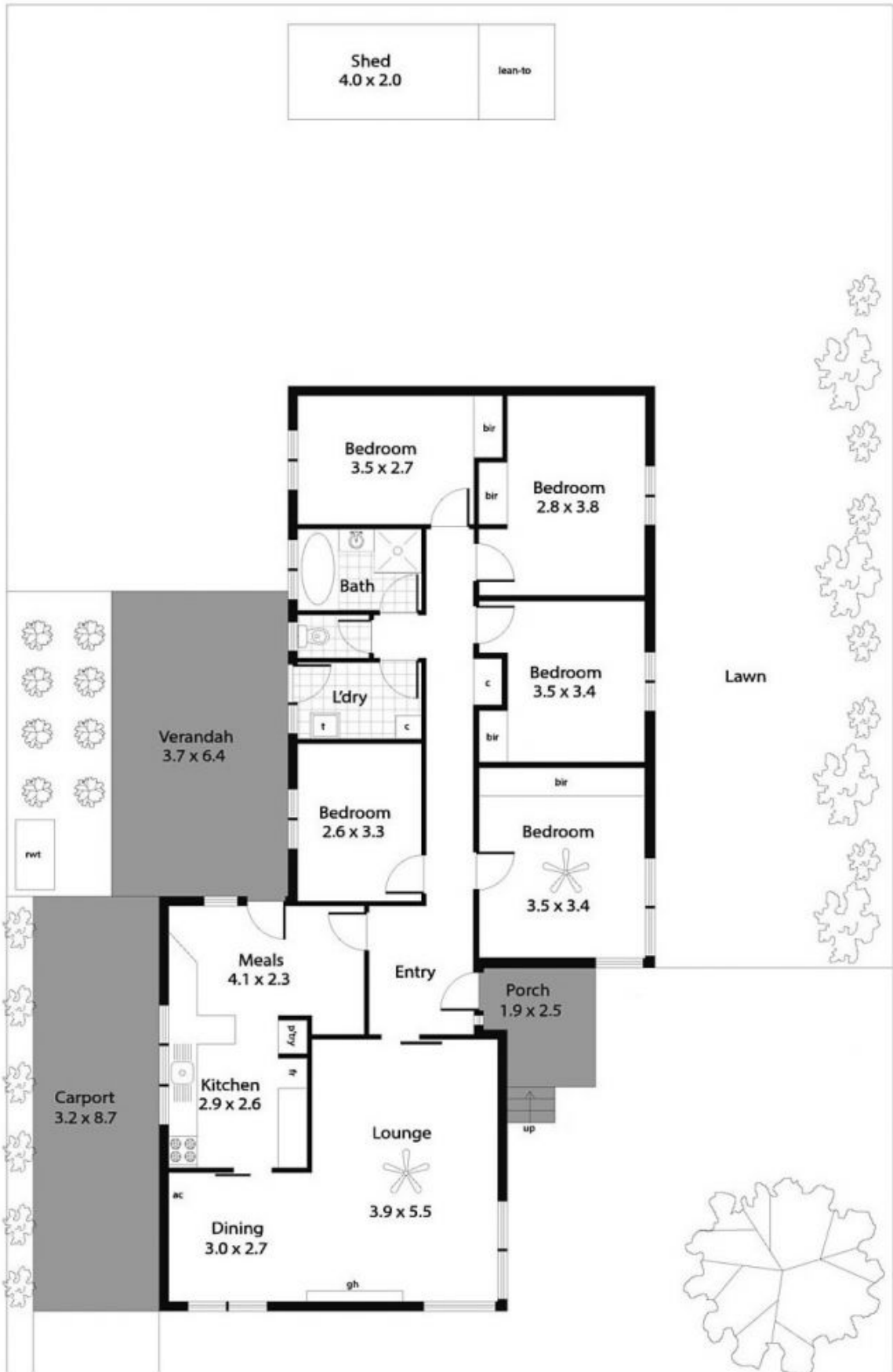
Outdoor living area, double length carport and this is a brilliant opportunity to purchase a low cost home in this marvellous location. Do not miss out it is a good one.

This site also could be a DEVELOPMENT SITE for buyers

**Price** : \$ 495,000  
**Land Size** : 602 sqm  
**View** : <https://www.bruse.com.au/sale/sa/eastern-suburbs/rostrrevor/residential/house/5551787>

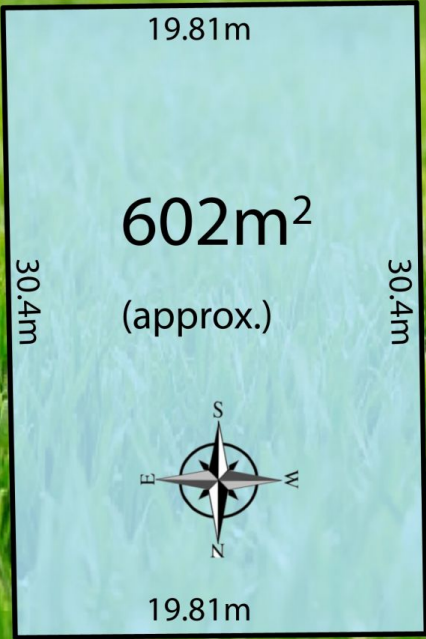


**Bevan Bruse**  
**08 8431 8181**



Area (Estimate only)	
Living	149.90 m <sup>2</sup>
Carport	27.84 m <sup>2</sup>
Porch	4.75 m <sup>2</sup>
Verandah	23.68 m <sup>2</sup>
Shed	8.00 m <sup>2</sup>
<b>Total</b>	<b>214.17 m<sup>2</sup></b>





**MONTACUTE ROAD**