



7B Drysdale Crescent CAMPBELLTOWN SA

3 2 2

THIS IS A WONDERFUL LIFESTYLE HOME BUILT WITH HIGH END QUALITY FIXTURES AND FITTINGS AND OFFERING A BRILLIANT OPPORTUNITY FOR ANY BUYER SEEKING TO LIVE IN THIS MARVELLOUS LOCATION CLOSE TO ALL AMENITIES OF THE AREA AND SURROUNDED BY OTHER QUALITY HOMES. YES, IT'S A SINGLE LEVEL HOME. A RARE FIND.

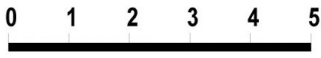
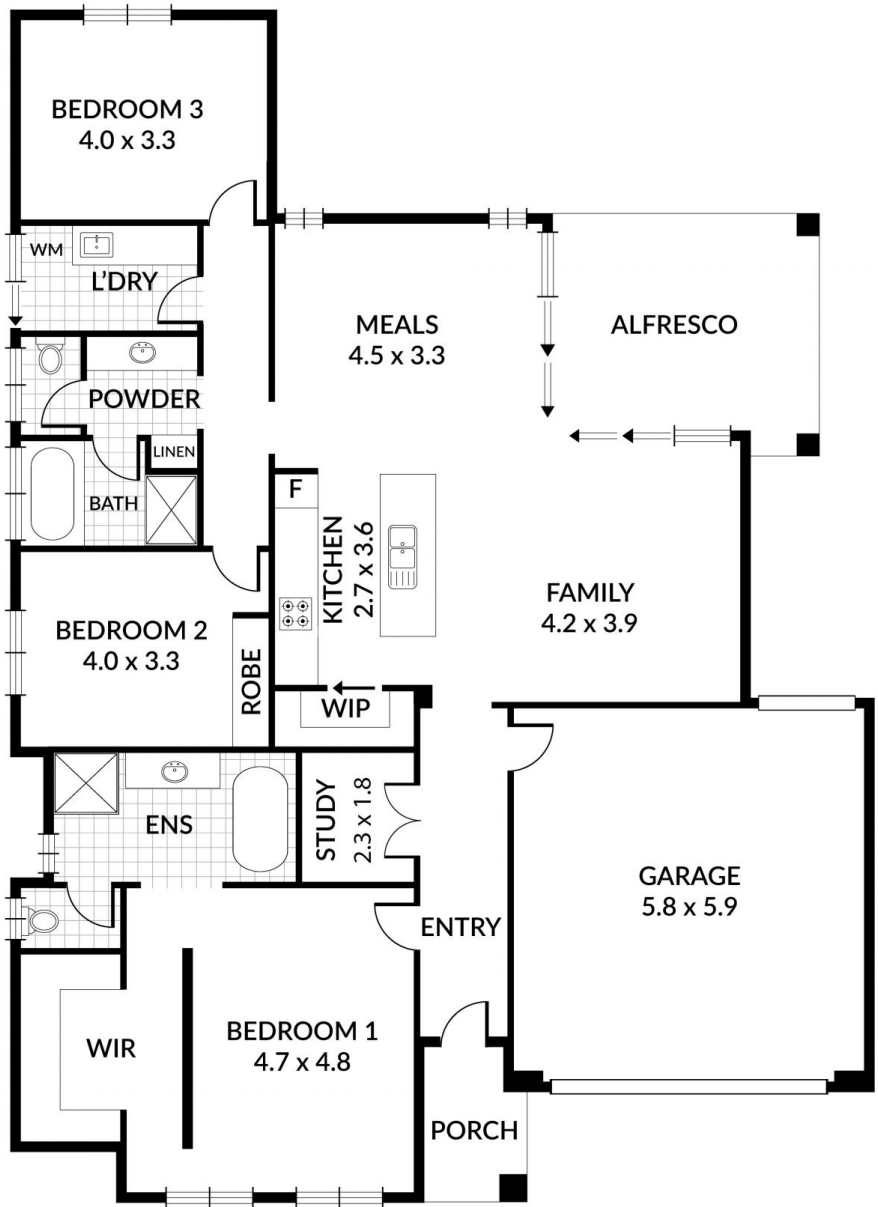
Price : \$ 690,000
Building Size : 24 sqm
Land Size : 418 sqm
View : <https://www.bruse.com.au/sale/sa/north-north-east-suburbs/campbelltown/residential/house/5551788>

This brilliant home is just a pleasure to offer. It has high ceilings and stunning bathrooms. The main bedroom suite of the residence is just amazing with a large walk in robe and a stunning ensuite bathroom. This bedroom suite is more like a 5-star hotel.

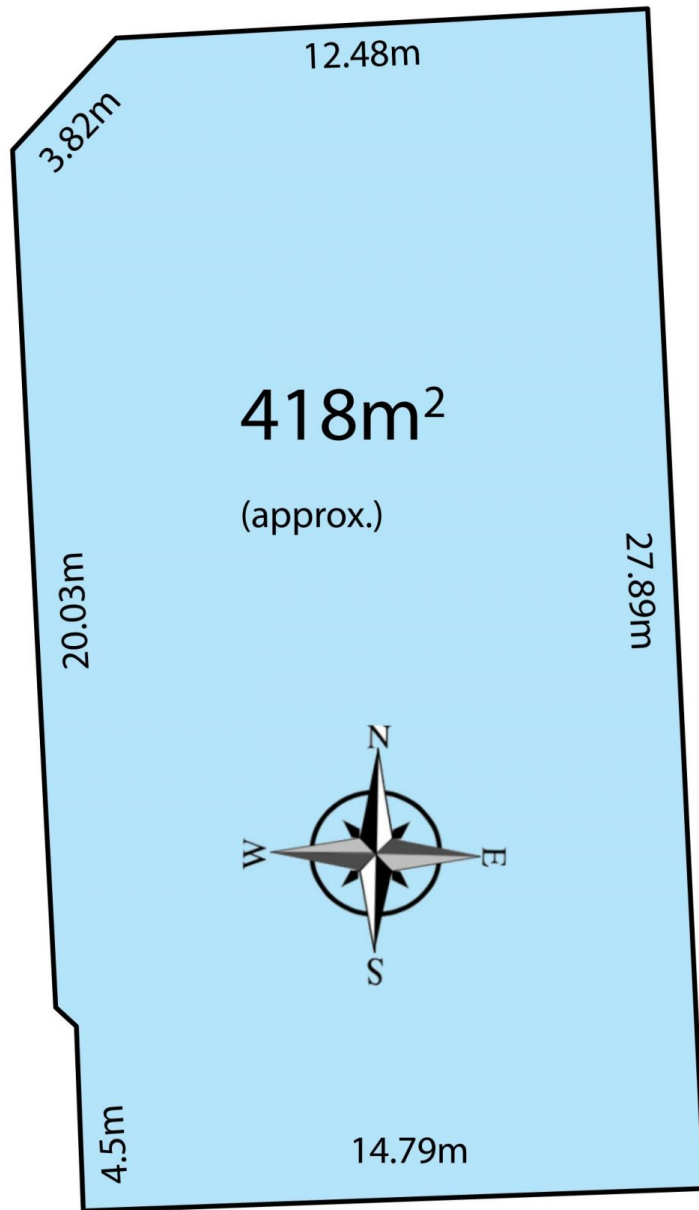
The entrance area further leads to two other good-sized bedrooms leading further through to an extremely large open plan living, dining and kitchen. The kitchen has



Bevan Bruse
08 8431 8181



Scale in metres. Indicative only. Dimensions are approximate. All information contained herein is gathered from sources we believe to be reliable. However we cannot guarantee its accuracy and interested persons should rely on their own enquiries



DRYSDALE CRESCENT