



25 Andrea Avenue NEWTON SA

3 1 2

Great family home in a lovely quiet street.

Big block of approximately 600m2 with a wide frontage.

BEAUTIFUL GARDEN SETTING AND A HUGE OUTDOOR UNDERCOVER GABLE ROOF ALFRESCO LIVING AREA.

This home has a wonderful flow. The large central kitchen separates the 2 large living rooms. All living rooms enjoy a lovely outlook and attract an abundance of natural light. It's an excellent design.

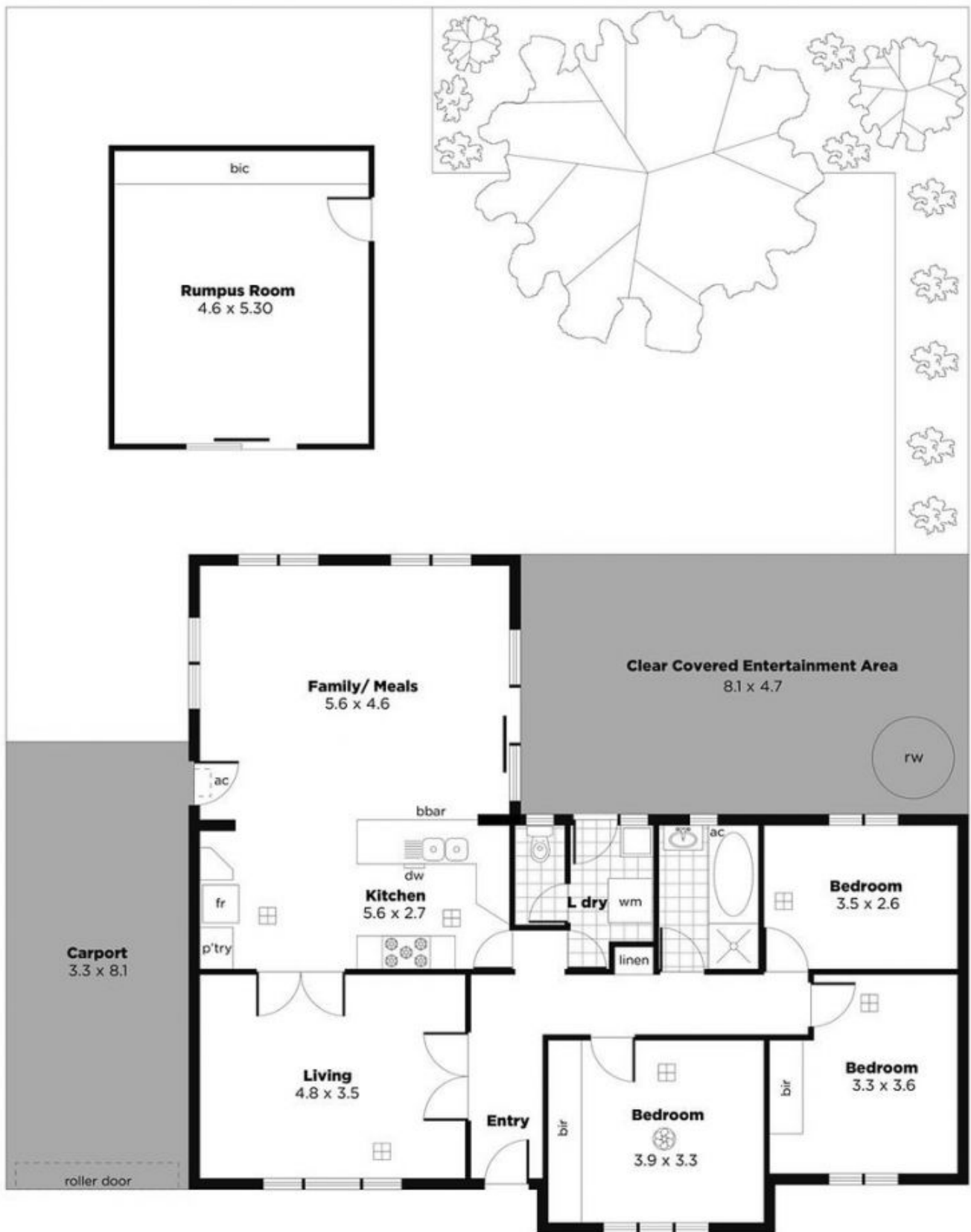
SEPARATE DETACHED STUDIO/ RUMPUS ROOM. A SUPERB BONUS ROOM WITH MANY USES.

3 big bedrooms.

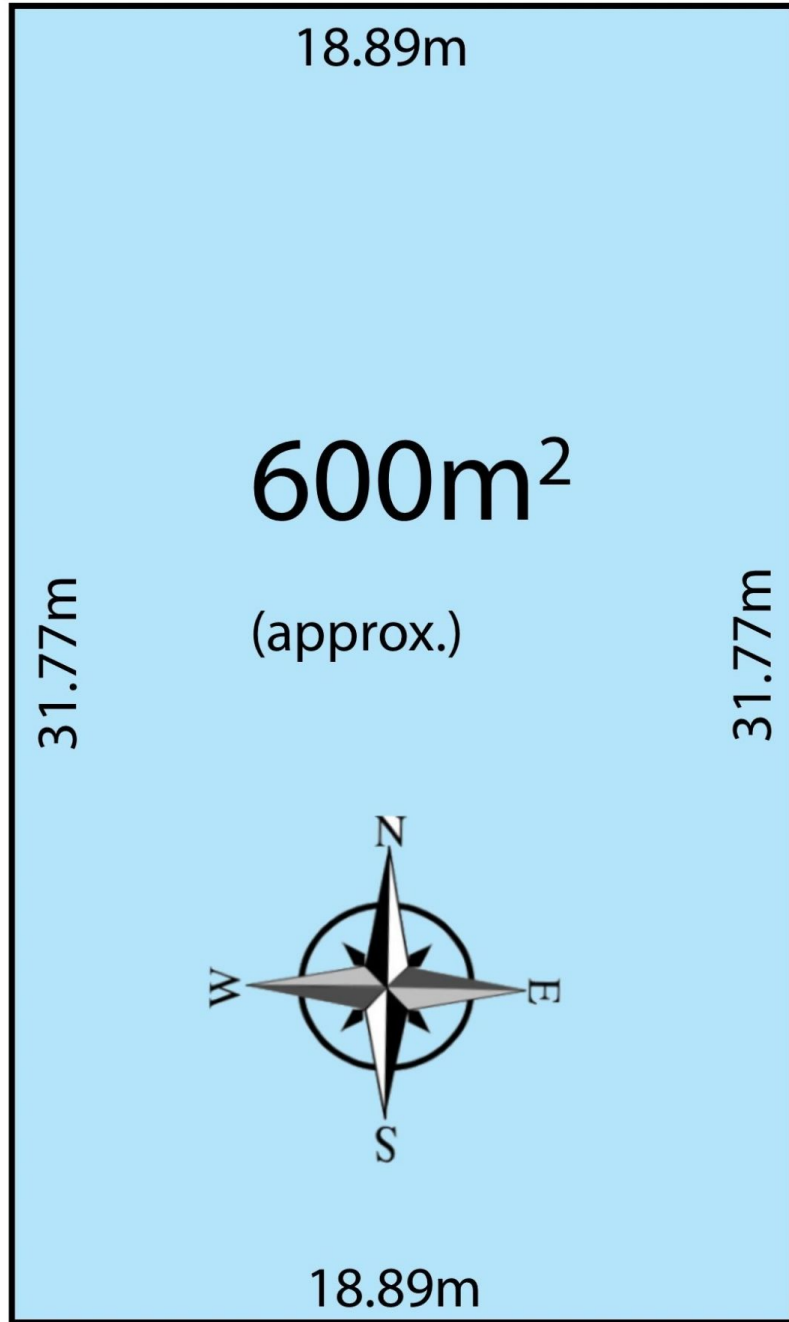
Price : \$ 515,000
Land Size : 600 sqm
View : <https://www.bruse.com.au/sale/sa/north-north-east-suburbs/newton/residential/house/5551796>



Theon Bruse
08 8431 8181



Area (Estimate only)	
Living	127.04 m ²
Carport	26.73 m ²
Clear Covered Ent. Area	38.07 m ²
Rumpus Room	24.38 m ²
Total	216.22 m²



ANDREA AVENUE