



### 5A Chapman Crescent GLEN OSMOND SA

790m<sup>2</sup> of vacant land with council approval to build a spectacular residence.

This makes the process very easy to build a home that could possibly be iconic.

The generous size allotment has allowed for approval of a very large home.

Land Size 790m<sup>2</sup> (approx.)  
House Size 486m<sup>2</sup> (approx.)

Views! Absolutely breathtaking.  
Panoramic outlook over the city of Adelaide to the ocean.

Please call for a detailed copy of the house plans.

A unique opportunity not to be missed.

School Zone - Glenunga International High School & Linden Park Primary School

THEON BRUSE 0419 816 470

**Land Size** : 790 sqm

**View** : <https://www.bruse.com.au/sale/sa/eastern-suburbs/glen-osmond/residential/land/5551912>



**Theon Bruse**  
**08 8431 8181**



**790m<sup>2</sup>  
(approx.)**

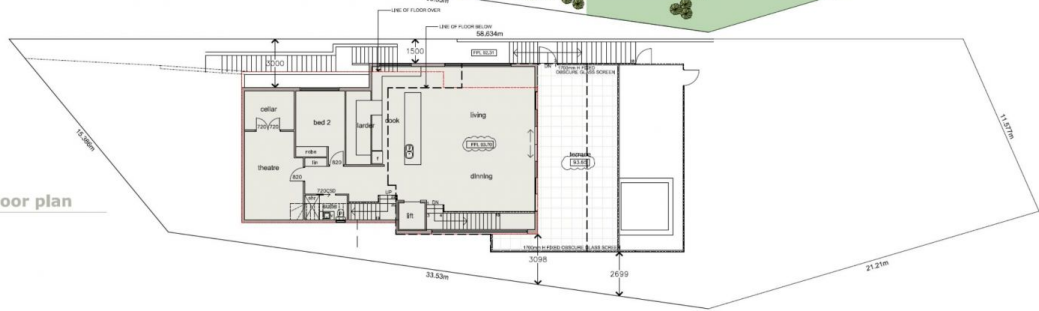
**CHAPMAN ROAD**



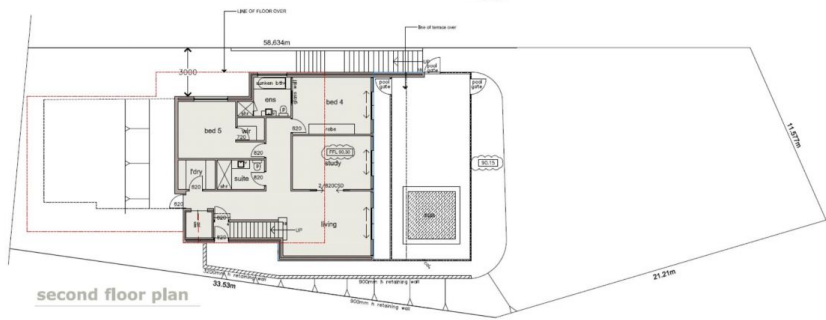
ground floor plan



first floor plan



second floor plan



AREAS:	
GROUND MAIN LIVING:	81.60
PORCH:	3.50
GARAGE:	40.80
LOWER FIRST MAIN LIVING:	172.70
TERRACE:	32.9
LOWER SECOND MAIN LIVING:	125.4
TOTAL:	486.9
TOTAL SITE:	783.00