

4 Bruce Avenue ROSTREVOR SA

What a fantastic location! Bruce Ave in sought after Rostrevor has always been a winner. It is a quiet street complete with a lovely park and surrounded by attractive homes.

The property has planning consent approval to build 2 spacious double storey homes of approximately 250m² of total house size. These have been designed by a talented architect so they are not your typical looking new home design. These homes once constructed will stand out from the crowd. Executive living at its best.

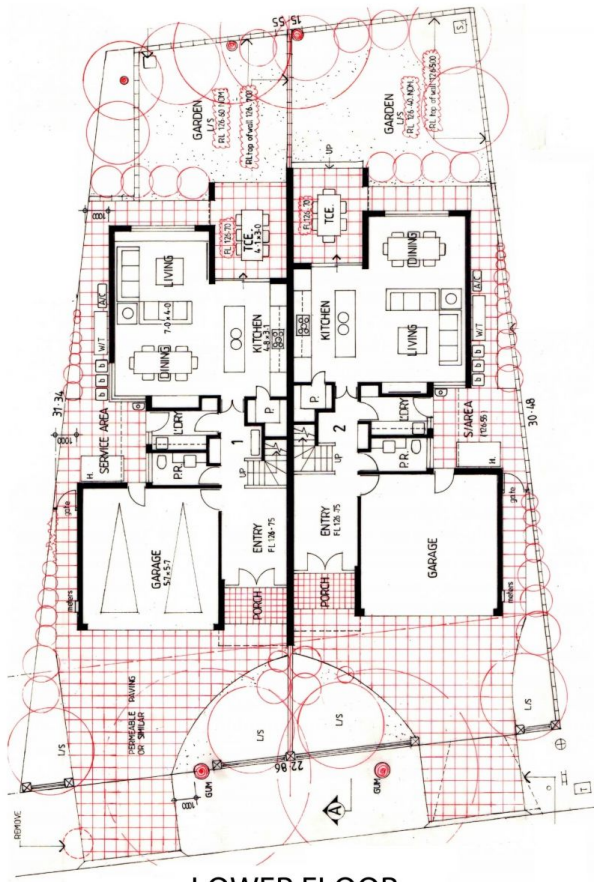
Currently the site has a neat & tidy home that is rented out until 4/11/18 for \$330p/wk. Perfect scenario to purchase & have time to organise your builder and affairs whilst receiving a weekly income.

Land Size : 585 sqm
View : <https://www.bruse.com.au/sale/sa/eastern-suburbs/rostrrevor/residential/land/5551914>

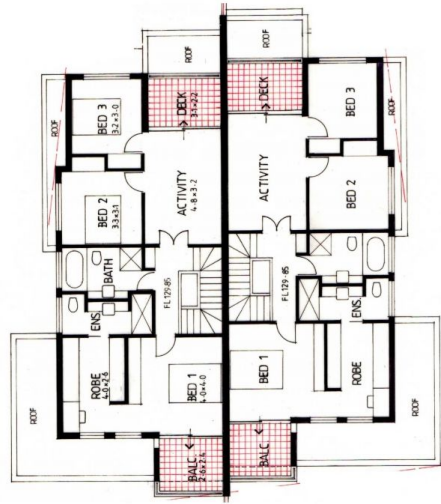


Theon Bruse
08 8431 8181

APPROVED PLANS



LOWER FLOOR



UPPER FLOOR