



9 Tyringa Avenue ROSTREVOR SA

What a superb opportunity!

The house plan approved is spacious with 238m² of total house size. Double storey. Main bedroom suite on the lower level. Study/cinema room. Generous open plan everyday living & meals. Upper level with 3 large bedrooms and a large retreat living room. Double garage and freestanding. Check out the house plan! The hard work has been done. Obviously you can build something different if you require subject to council consent.

Corner allotments like this are hard to find, especially in a such a sought after location like Rostrevor.

Rostrevor is a lovely family friendly location with excellent schooling and lots of open green spaces and parks. All only a 15 minute commute to the city! Wow.

Get excited!

THEON BRUSE 0419 816 470

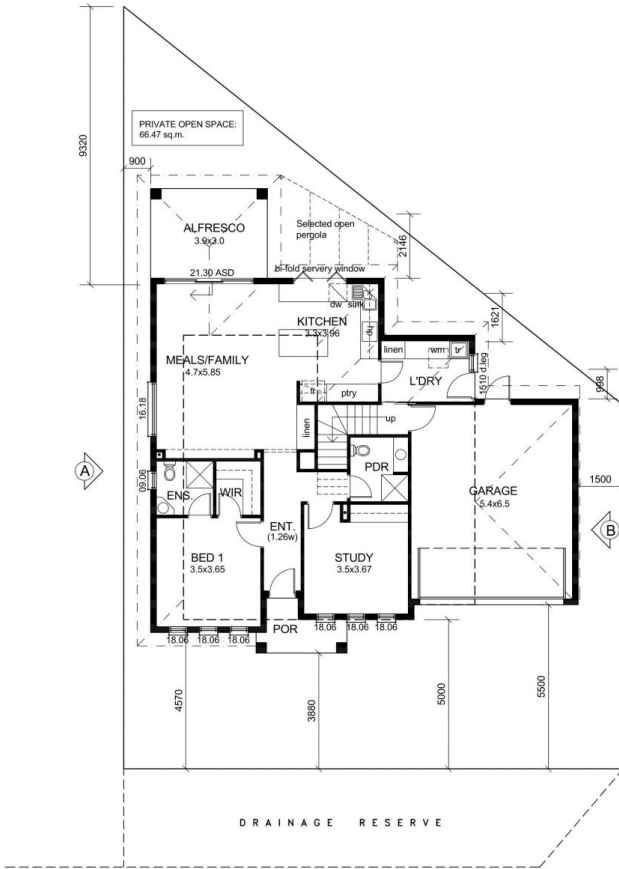
All information provided has been obtained from sources we believe to be accurate, however, we cannot guarantee the information is accurate and we accept no liability for any errors or omissions (including but not limited to a

Land Size : 315 sqm

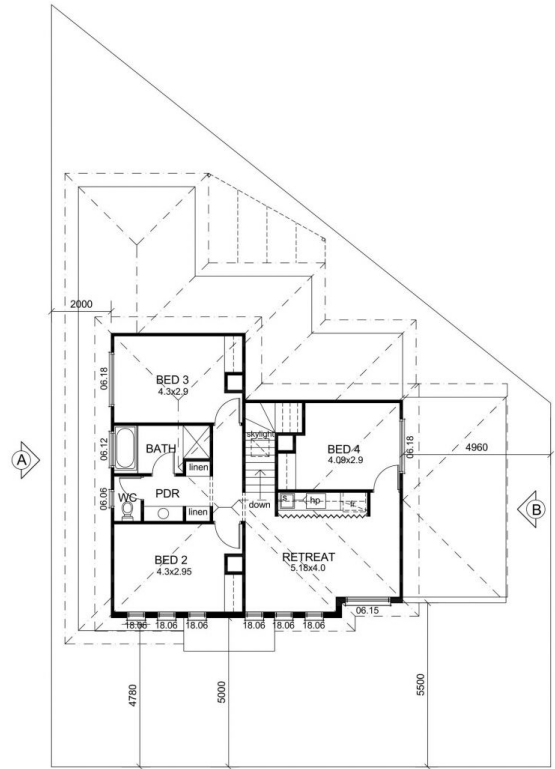
View : <https://www.bruse.com.au/sale/sa/eastern-s-uburbs/rostrrevor/residential/land/5551939>



Theon Bruse
08 8431 8181



TYRINGA AVENUE
GROUND FLOOR



UPPER FLOOR

AREAS:

L. LIVING	103.64
U. LIVING	80.18
GARAGE	38.51
ALFRESCO	11.73
PORTICO	4.02
TOTAL	238.08 sq.m.