



9 Tyringa Avenue ROSTREVOR SA

This is a special allotment of land. You will love the quiet location. You can build what you want (STCC) however this land has an approved plan custom designed for the owner. Their situation has changed which is a great benefit for the next owner. A great deal of time and effort have been put into designing a fantastic home. Check out the plans! Almost 300m² of total house size. Its huge.

Great street. Wide frontage. This block is a winner!

THEON BRUSE 0419 816 470

All information provided has been obtained from sources we believe to be accurate, however, we cannot guarantee the information is accurate and we accept no liability for any errors or omissions (including but not limited to a property's land size, floor plans and size, building age and condition) Interested parties should make their own enquiries and obtain their own legal advice.

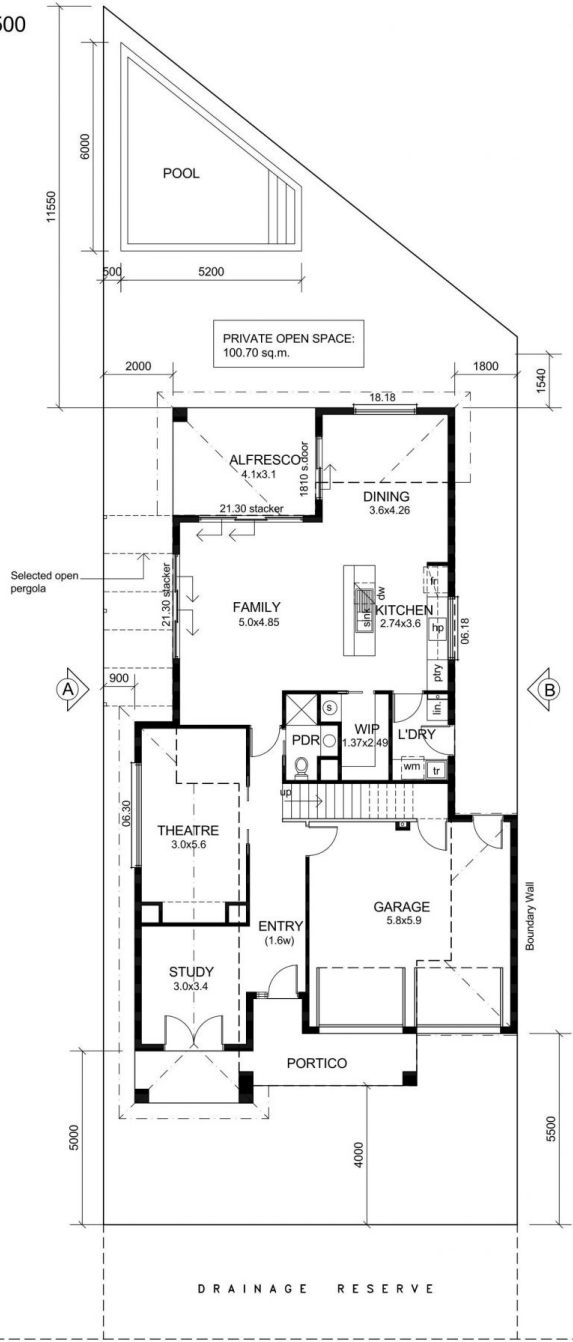
Land Size : 360 sqm

View : <https://www.bruse.com.au/sale/sa/eastern-s-uburbs/rostrom/residential/land/5551941>



Theon Bruse
08 8431 8181

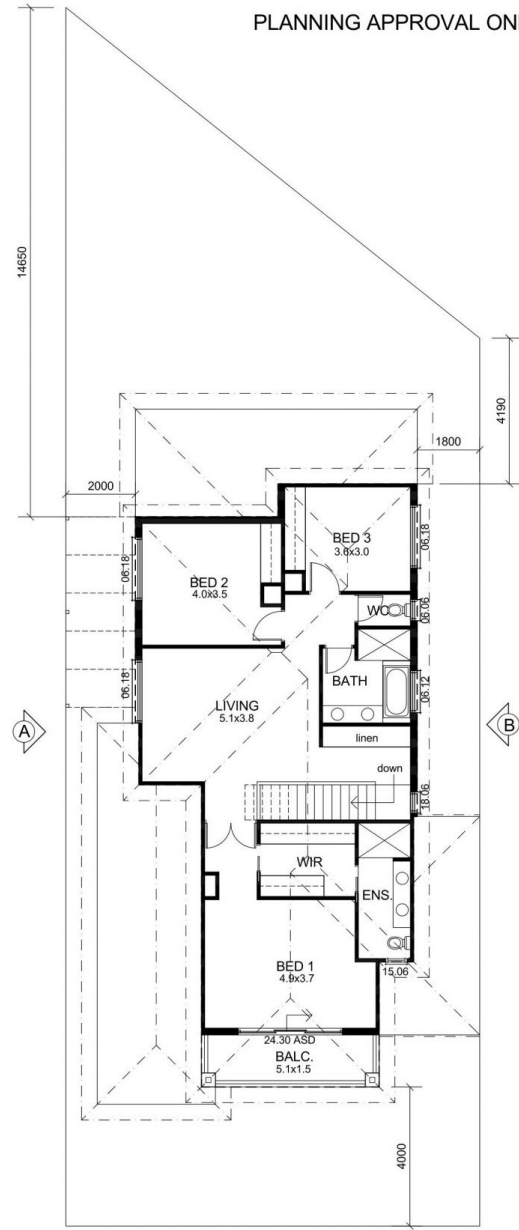
LOT 500



TYRINGA AVENUE

GROUND FLOOR

PLANNING APPROVAL ONLY



UPPER FLOOR

AREAS:	
L. LIVING	117.53
U. LIVING	107.94
GARAGE	37.01
ALFRESCO	12.71
POR/BALC	21.26
TOTAL	296.45 sq.m