



22/152 Montacute Road Rostrevor SA

2 1 1

BUYERS LOOKING FOR A LOW MAINTENANCE TOWNHOUSE/ UNIT WILL APPRECIATE THE SPACIOUS, AIRY DESIGN AND GORGEOUS GARDEN SETTING. THIS HOME HAS SUCH A GREAT FEEL ABOUT IT.

Price : \$ 340,000

View : <https://www.bruse.com.au/sale/sa/eastern-suburbs/rostrrevor/residential/unit/6701906>

2 SEPARATE AND GENEROUS LIVING AREAS.

Fully equipped kitchen with lots of bench space.

High lofty raked ceilings to the main living room.

2 bedrooms on the upper level, both with access to the balcony. Enjoy a stretch and a lovely outlook when you awake each morning.

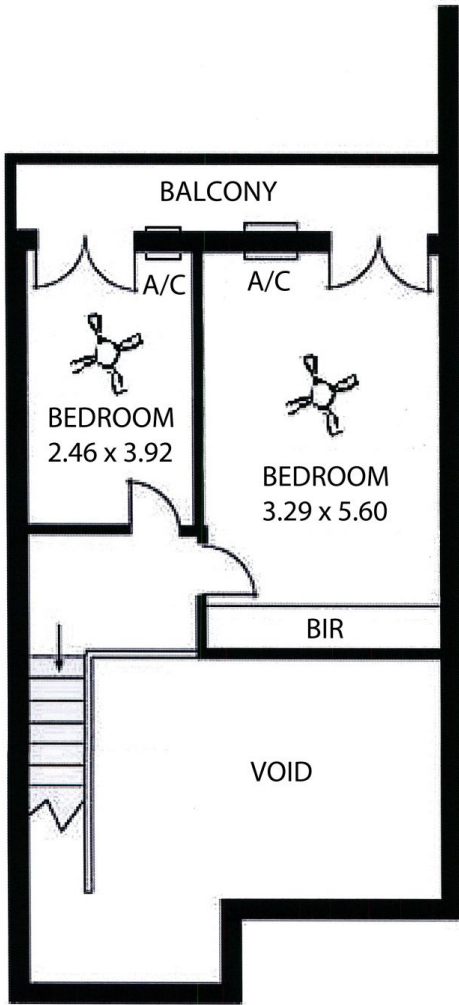
2 courtyard areas. One at the front of the house and one at



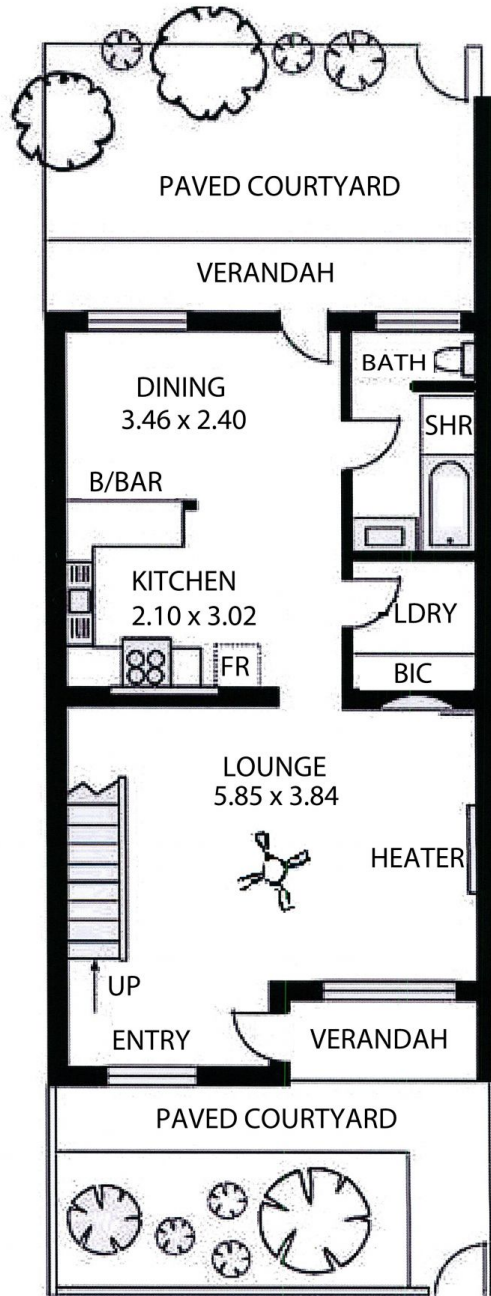
Theon Bruse
08 8431 8181



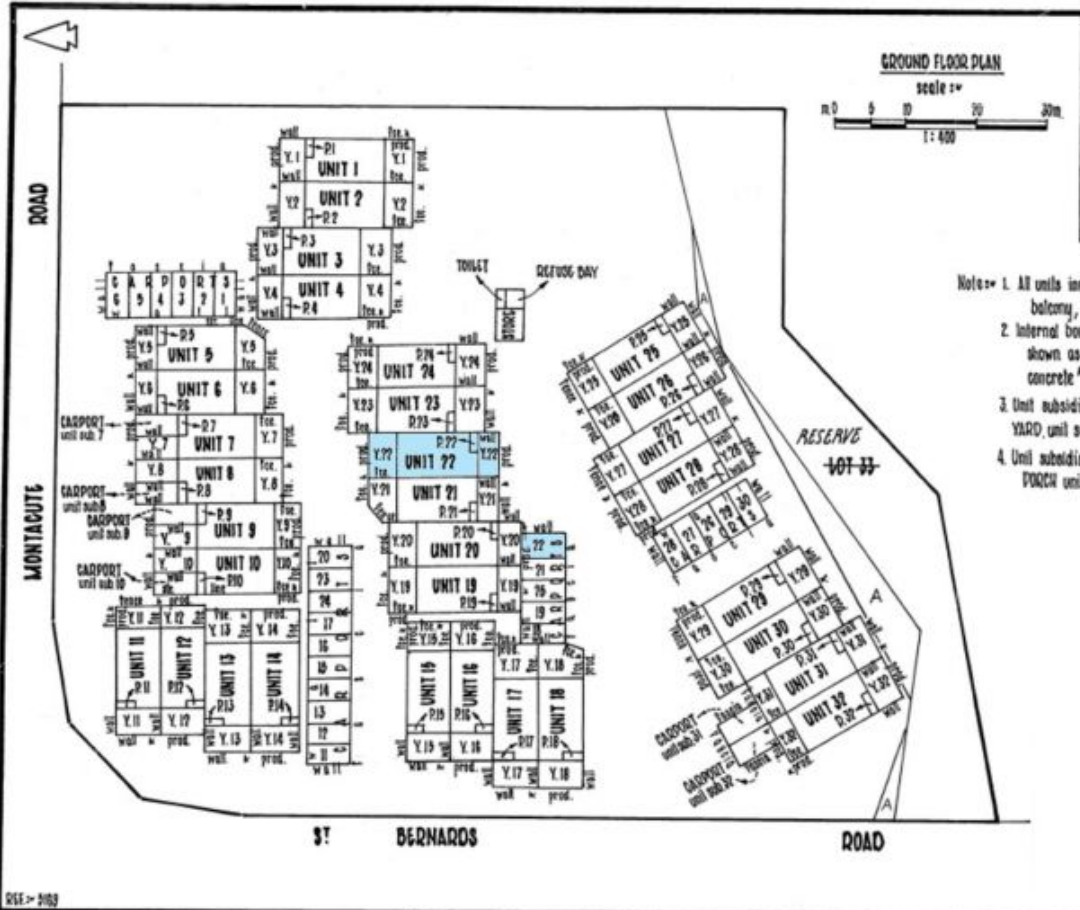
Bevan Bruse
08 8431 8181



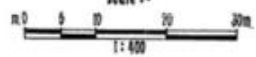
FIRST FLOOR



GROUND FLOOR



GROUND FLOOR PLAN
scale 1:400



- Note:-
1. All units include 5 unit subsidiaries - carport, balcony, porch and 2 yards.
 2. Internal boundaries between unit subsidiaries shown as carports are defined by 'join in concrete' unless otherwise shown.
 3. Unit subsidiaries shown Y.1 - Y.32 refers to YARD, unit subsidiary 1 - 32 respectively.
 4. Unit subsidiaries shown P.1 - P.32 refers to PORCH, unit subsidiary 1 - 32 respectively.