

34 Avenue Road Stirling SA

3 2 2

BEAUTIFUL LOW MAINTENANCE HOME BOASTING STYLE, FUNCTIONALITY AND MINIMALISM - PERFECT FOR BUSY FAMILIES AND PROFESSIONALS.

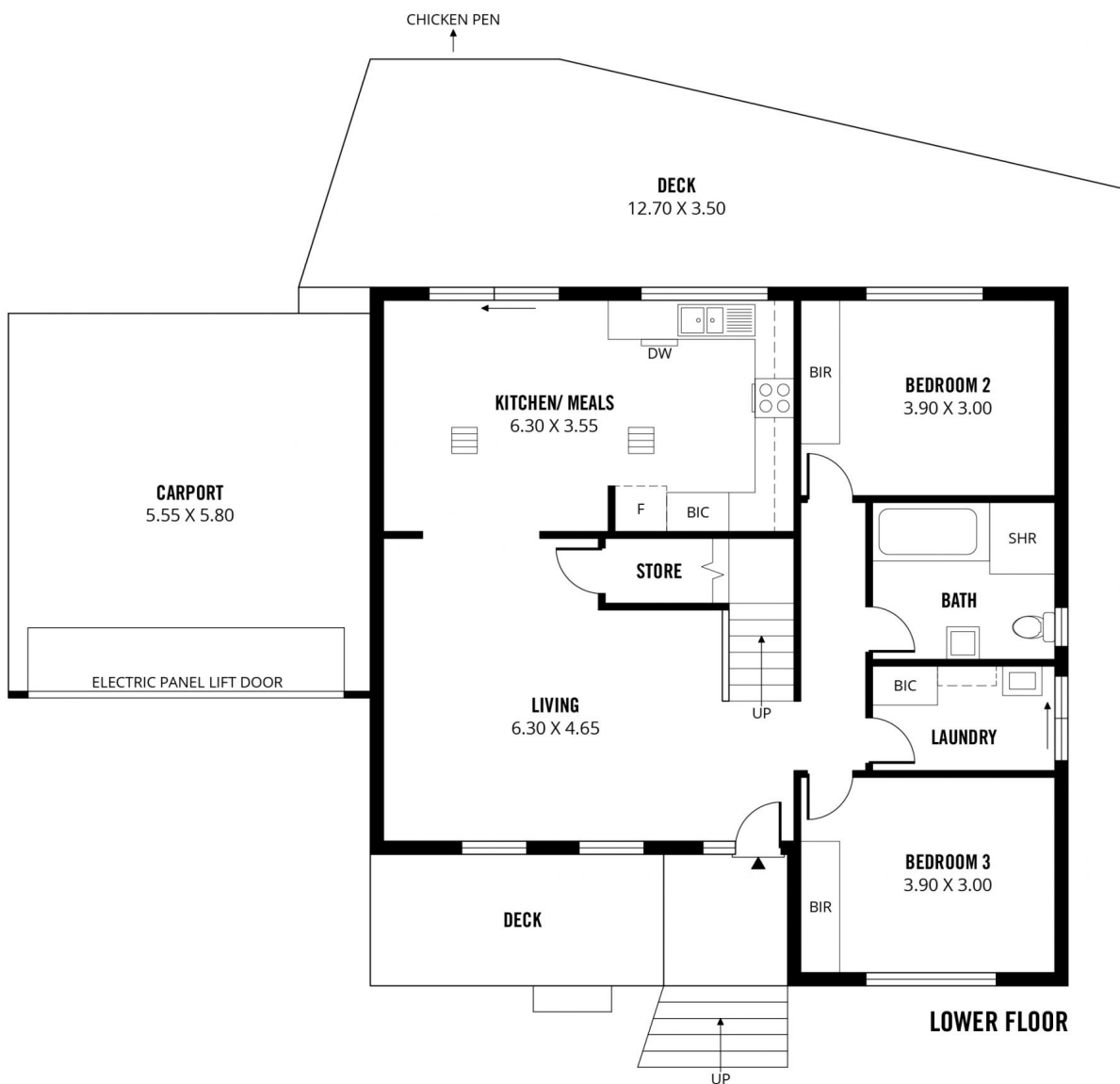
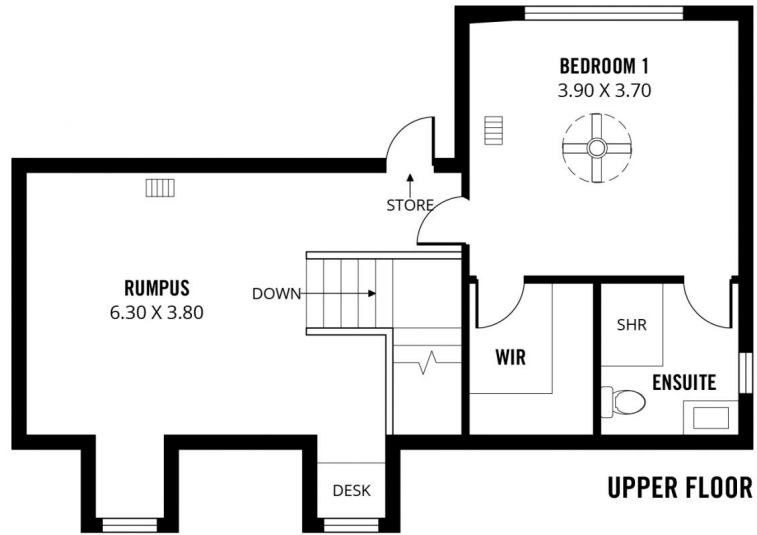
Perfectly positioned amid a tranquil bush setting you'll find this wonderful home in highly sought-after Stirling. A short stroll and you'll be in the heart of the laid-back Stirling Village with picturesque leafy streets, an excellent choice of charming boutique shops, cafes, and restaurants, and of course the iconic monthly Stirling Markets and the exciting Stirling Laneways.

Just 20 minutes to the CBD, Stirling embraces the perfect blend of a desirable country lifestyle with all the benefits of modern day living. Neighbouring towns such as Piccadilly, Crafers, Aldgate and Bridgewater also have a lot to offer with the Mount Lofty and Cleland Wildlife Park only 10

Price : \$ 1,150,000
Land Size : 797 sqm
View : <https://www.bruse.com.au/sale/sa/adelaide-hills/stirling/residential/house/7199455>



Toby Shipway
8413 8181



242m²

TOTAL

160m²

Living

50m²

Deck

32m²

Carport



Scale in metres. This drawing is for illustration purposes only. All measurements are approximate and details intended to be relied upon should be independently verified.

Produced by **The Fotobase Group**