



1607/96 North Terrace Adelaide SA

3 2 2

EXCLUSIVE 3 BEDROOM SUB-PRENTHOUSE APARTMENT - OPPOSITE ADELAIDE OVAL & THE RIVERBANK PRECINCT.

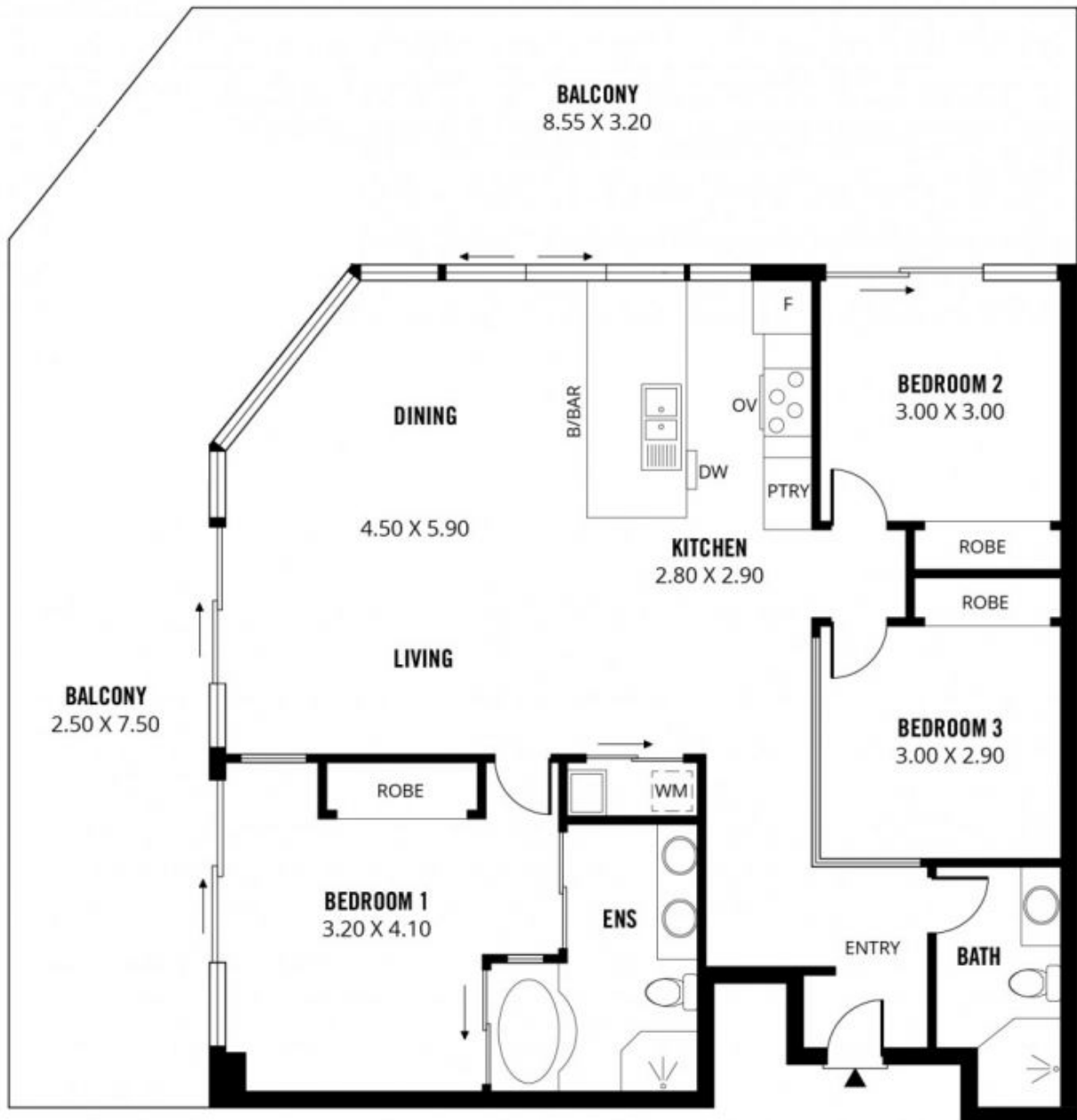
Boasting some of the most amazing uninterrupted views in town, this spacious 3 bedroom apartment offers an envious city lifestyle in such a premium CBD location. Positioned on the 16th floor in the south-west corner of the Embassy Apartments, the extensive use floor to ceiling windows and the huge balcony of nearly 70sqm embrace the breathtaking 270 degree views over the River Torrens, stunning ocean sunsets, Adelaide Hills, and the city skyline.

Less than 500 metres away is the new Royal Adelaide Hospital with the Medical Precinct adjacent. Education facilities here include the University of Adelaide's medical

Price : \$ 820,000
Building Size : 177 sqm
View : <https://www.bruse.com.au/sale/sa/adelaide/adelaide/residential/apartment/7200037>



Toby Shipway
8413 8181



177m²

TOTAL

109m²

Living

68m²

Balcony



Scale in metres. This drawing is for illustration purposes only. All measurements are approximate and details intended to be relied upon should be independently verified. Produced by **The Fotobase Group**