

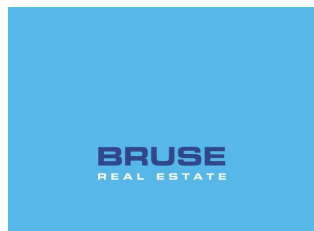
11A Beaufort Crescent Felixstow SA

3 2 1

Please register your interest in this property by clicking on the Book Inspection Button or Email/Call Agent button. You will be informed of any inspection times. It is imperative that you register your attendance at our inspections.

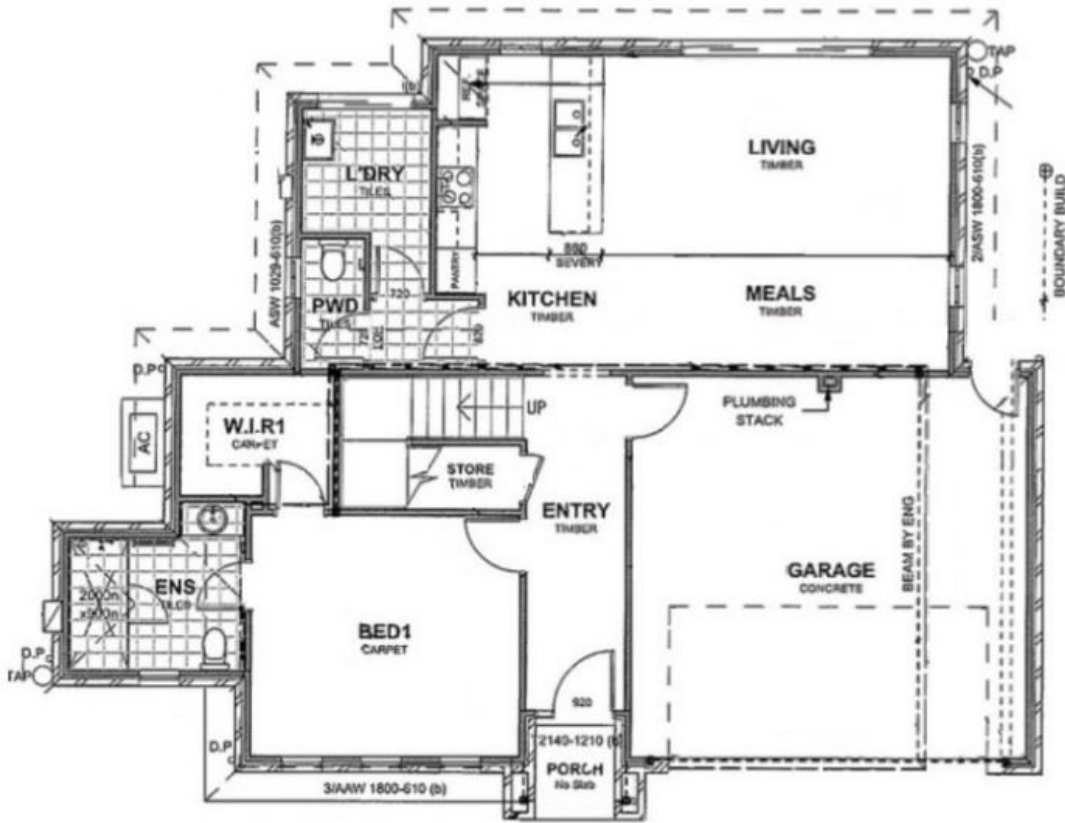
Price : \$720.00 pw
View : <https://www.bruse.com.au/lease/sa/eastern-suburbs/felixstow/residential/house/8050672>

The ground floor consists of bedroom1 with walk in robe and ensuite with a large shower. Large open plan kitchen with dishwasher and gas cooktop. There is a meals area and living room , also laundry and powder room.
The second level consists of 2 large bedrooms both with built ins and a generous size main bathroom.
The home features ducted air-conditioning.
The home also includes a double garage under the main roof with internal access into the home.
Offering a low maintenance garden, extensive paving and colourbond fencing.

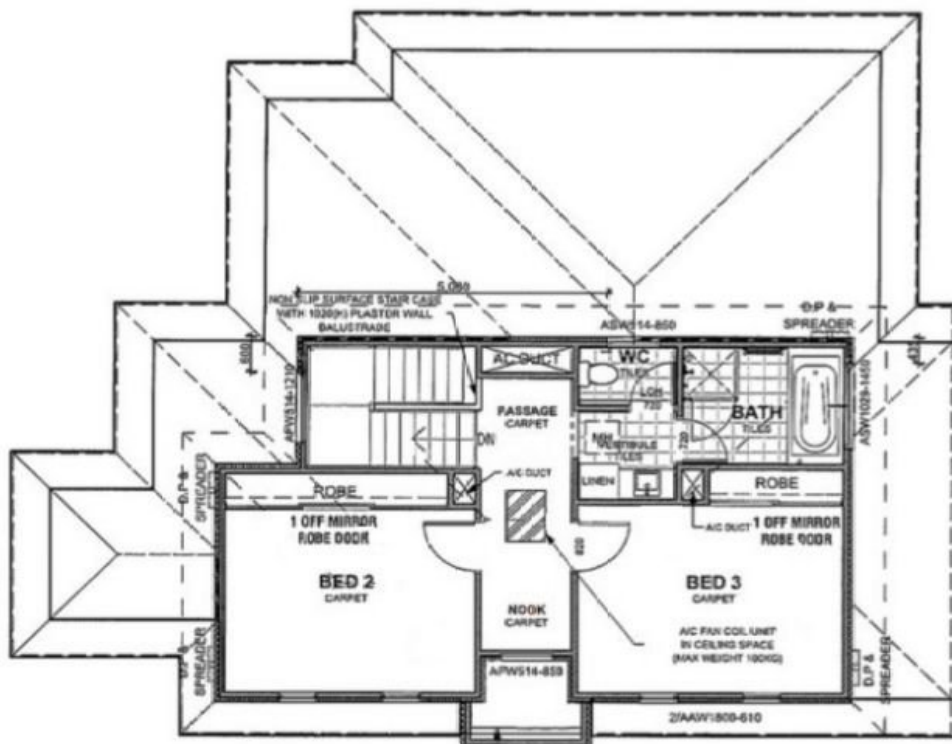


Property Management
08 8431 8485

11A Beaufort Crescent, Felixstow



Ground Level



Second Level

This floorplan is for illustration purposes only and all measurements are approximate. Any fixtures shown may not necessarily be included in the sale contract and is essential that any queries are directed to the agent. Any information that is intended to be relied upon, should be independently verified. Neither the agent, vendor or contracted illustrators take any responsibility of any omission, wrongful inclusion or topographical error which may occur in this drawing as it is an artistic impression only. While every endeavor has been made to verify the correct details in the publication, neither the agent, vendor nor contracted typesetter accept liability for any error or omission.