



**16 Ellesmere Street Kensington Park SA**

4 2 3

PLEASE CHECK THE VIRTUAL TOUR ONLINE

What a brilliant opportunity this really is! A marvelous location! Close to Pembroke School. Just 200 metres away featuring all the amenities of the Eastern Suburbs of Adelaide wonderful tree lined street.

This is a home that has been lived in since it was constructed in 1995 by one owner. The home has been well maintained and offers an opportunity for family buyers who would be wanting a 4-bedroom home, with the main bedroom on the lower level, three other bedrooms on the upper level and two generous living areas, both formal and informal which ideally suits family lifestyle.

**Type** : House  
**Price** : \$ 1,660,000  
**Building Size** : 269 sqm  
**Land Size** : 438 sqm  
**View** : <https://www.bruse.com.au/sale/sa/eastern-suburbs/kensington-park/residential/house/8114509>

[For full version visit the website](#)



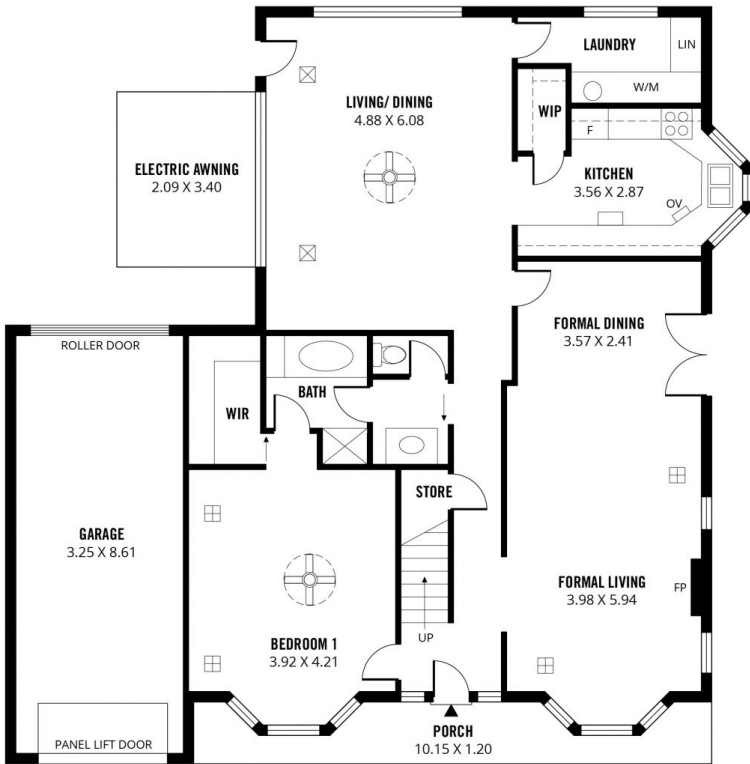
**Bevan Bruse**  
08 8424 8184



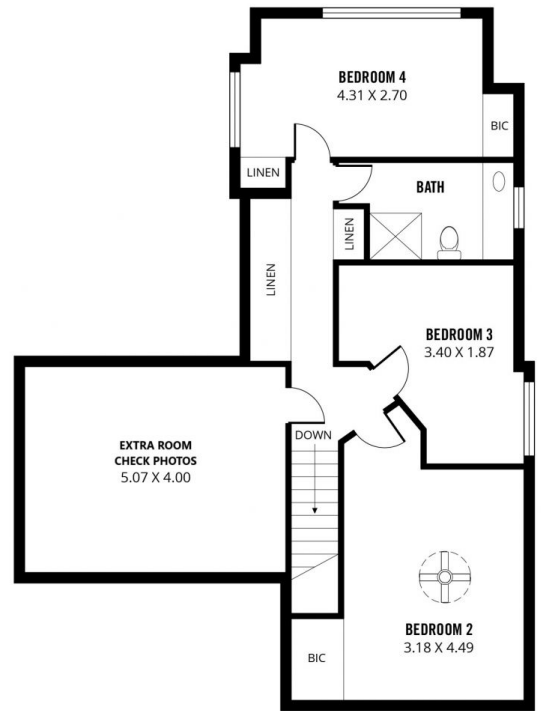
**Theon Bruse**  
08 8424 8184

RWT

SHED  
1.20 X 2.00



GROUND FLOOR



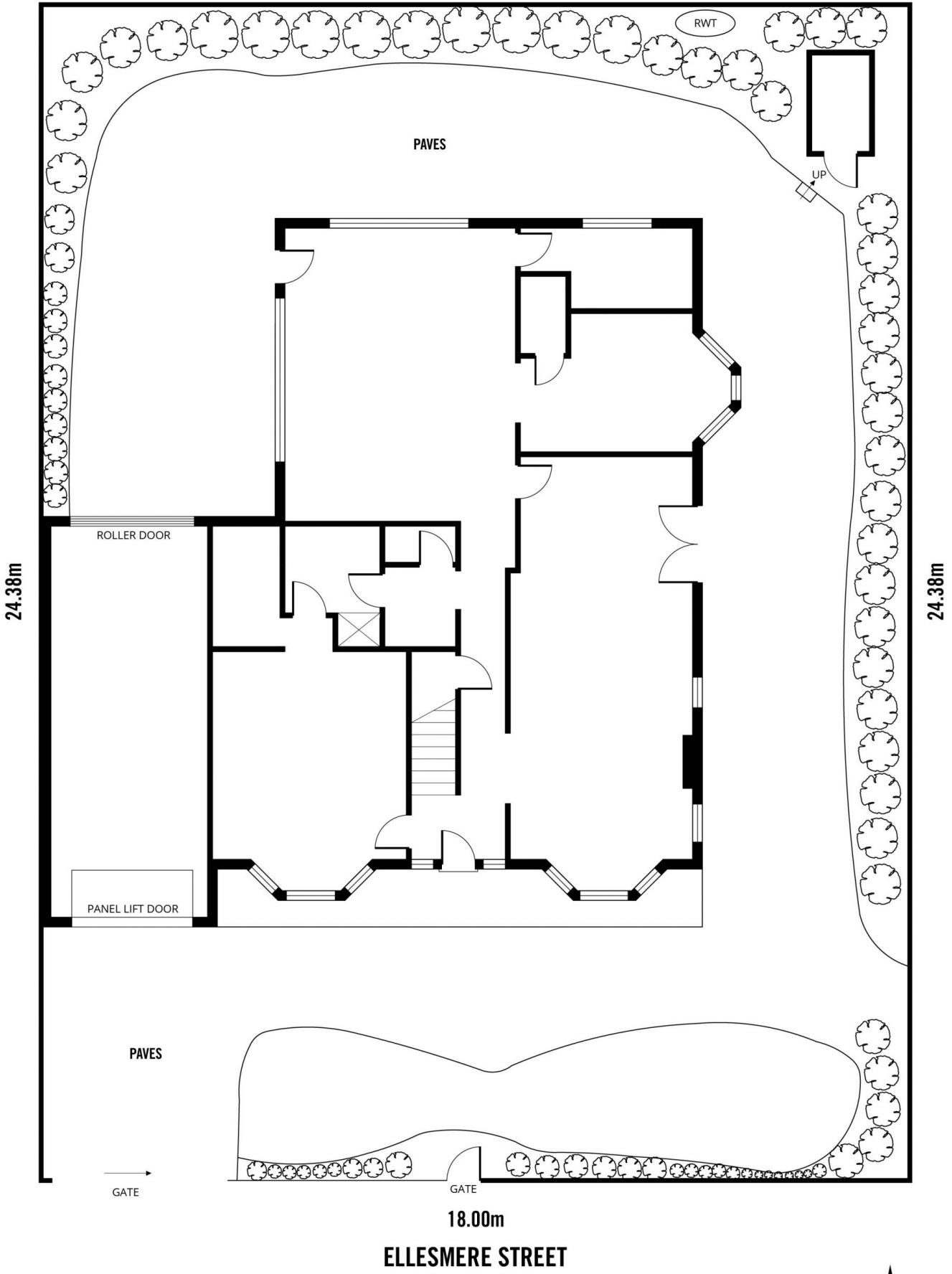
FIRST FLOOR



Scale in metres. This drawing is for illustration purposes only. All measurements are approximate and details intended to be relied upon should be independently verified.

Produced by The Fotobase Group

18.00m



24.38m

24.38m

18.00m

ELLESMERE STREET

# SITE PLAN



Scale in metres. This drawing is for illustration purposes only. All measurements are approximate and details intended to be relied upon should be independently verified.