



24 Dover Street Maylands SA

5 🏠 2 🚗 5 🚗

PLEASE CHECK THE VIRTUAL TOUR ONLINE

This character home is an amazing opportunity for any buyer seeking to live in this wonderful location, close to every convenience of Norwood Parade, shopping, cafes, restaurants, etc, so close to the city and a stunning home where you can move in live and enjoy a wonderful life immediately as it has all been done.

This home features a lock up garage for 3 cars and a double length carport for 2 cars. An unusual opportunity that will suit many buyers for family outdoor living or storing motor vehicles, trailers, caravans, boats, etc.

The home has been owned by the current owners since

[For full version visit the website](#)

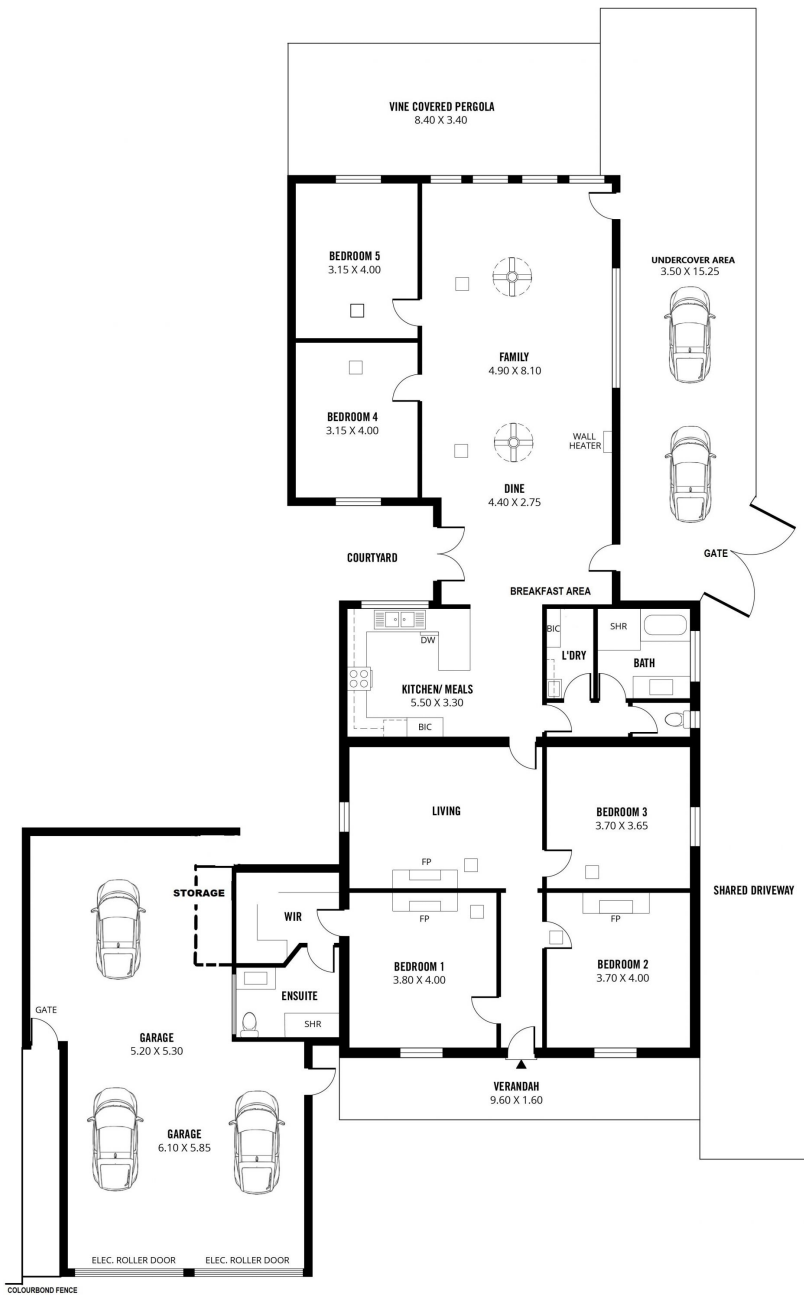
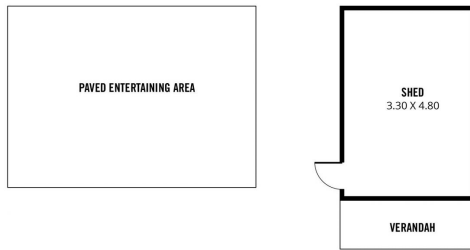
Type : House
Price : UNDER CONTRACT
Building Size : 423 sqm
Land Size : 682 sqm
View : <https://www.bruse.com.au/sale/sa/easter-n-suburbs/maylands/residential/house/8127863>



Bevan Bruse
08 8424 8184



Theon Bruse
08 8424 8184



423m²

TOTAL

206m²

Living

18m²

Shed

69m²

Garage

100m²

Verandah/
Pergola

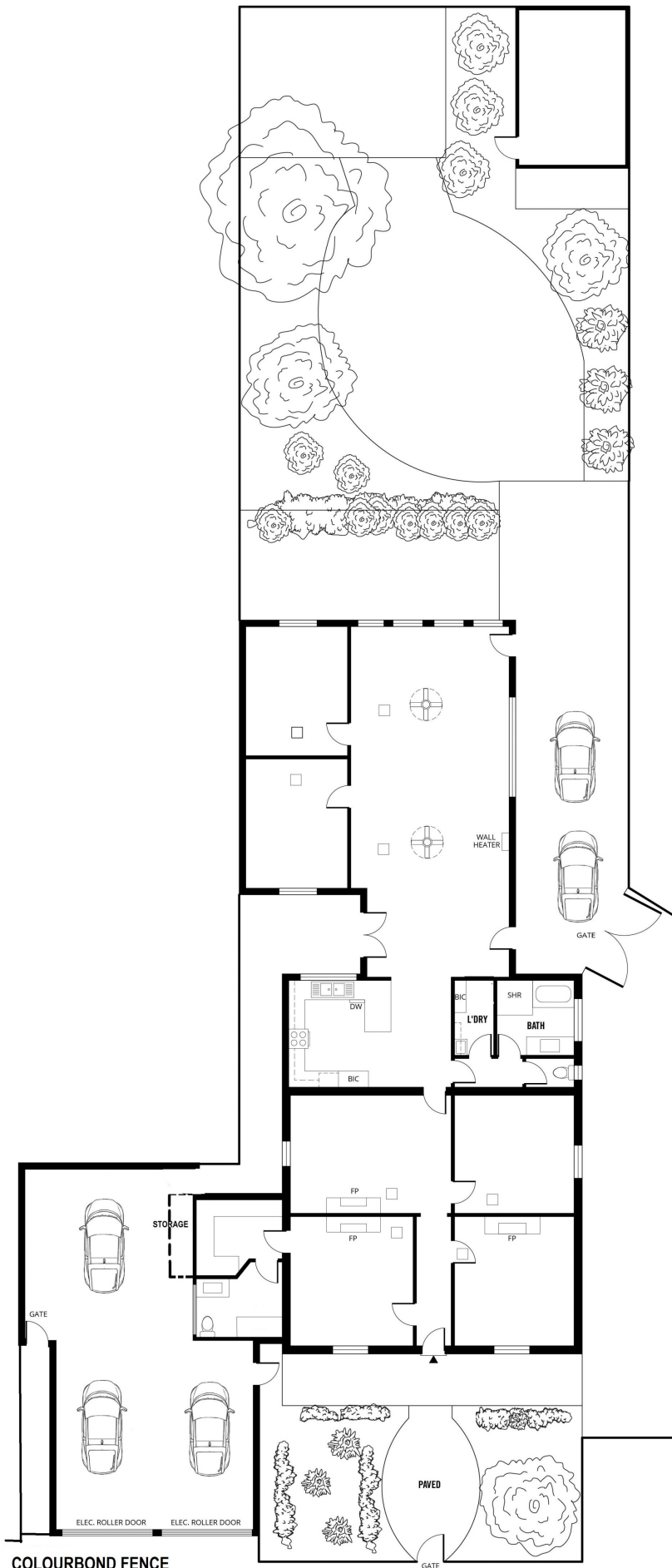
30m²

Paved
Ent. Area



Scale in metres. This drawing is for illustration purposes only. All measurements are approximate and details intended to be relied upon should be independently verified.

Produced by The Fotobase Group



COLOURBOND FENCE

DOVER STREET



**SITE PLAN
(NOT TO SCALE)**

Scale in metres. This drawing is for illustration purposes only. All measurements are approximate and details intended to be relied upon should be independently verified.

Produced by The Fotobase Group