



**23B Garfield Avenue Kurralta Park SA**

3 2 2

REGISTER: Please register your interest in this property by clicking on the Book Inspection Button or Email/Call Agent button. You will be informed of any inspection times. It is imperative that you register your attendance at our inspections.

NEWLY BUILT HOME- 23B. Built by 4Front Property Development.  
Disclaimer: Internal advertising photos are taken of 23B.

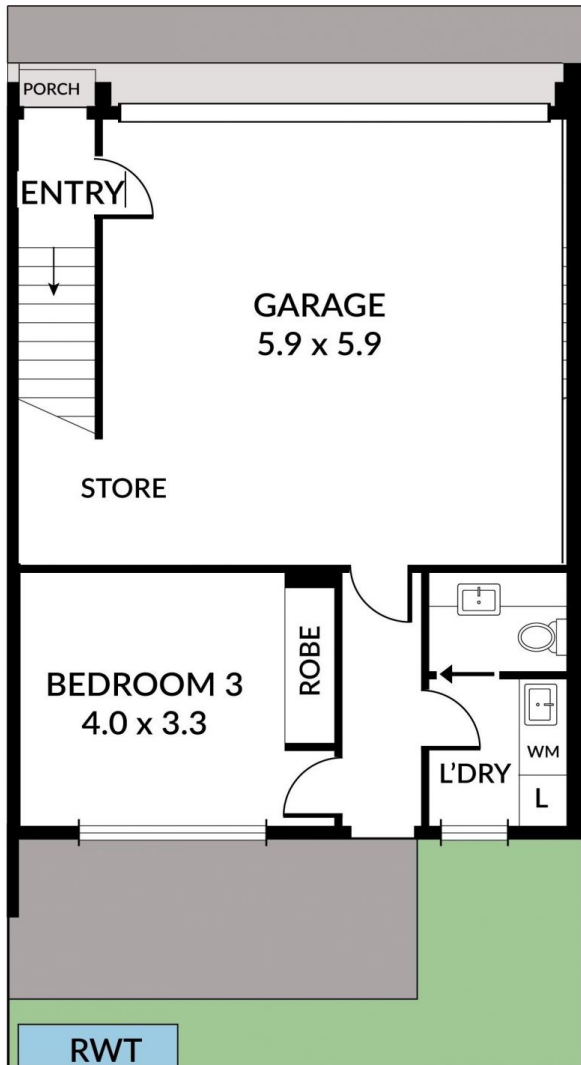
This near new home is located in an excellent location, and so close to the city and only 15 mins to the beach! Close to good schooling, shopping, transport and much more!

The homes offer a double garage, 2.7m ceilings, stunning

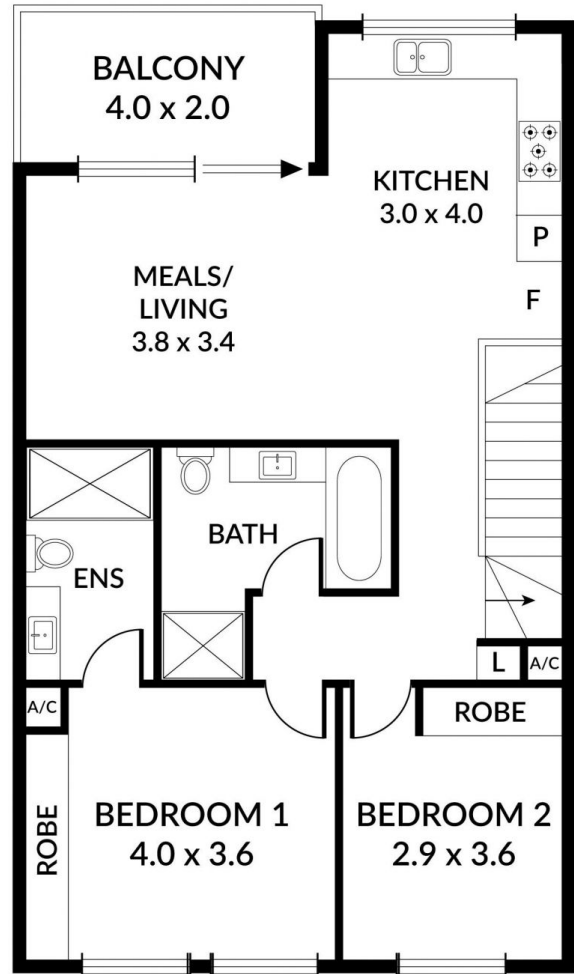
[For full version visit the website](#)

**Type** : House  
**Price** : \$720.00 pw  
**View** : <https://www.bruse.com.au/lease/sa/western-beachside-suburbs/kurralta-park/residential/house/8164553>

# Dwelling 2

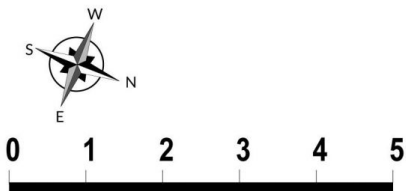


LOWER LEVEL



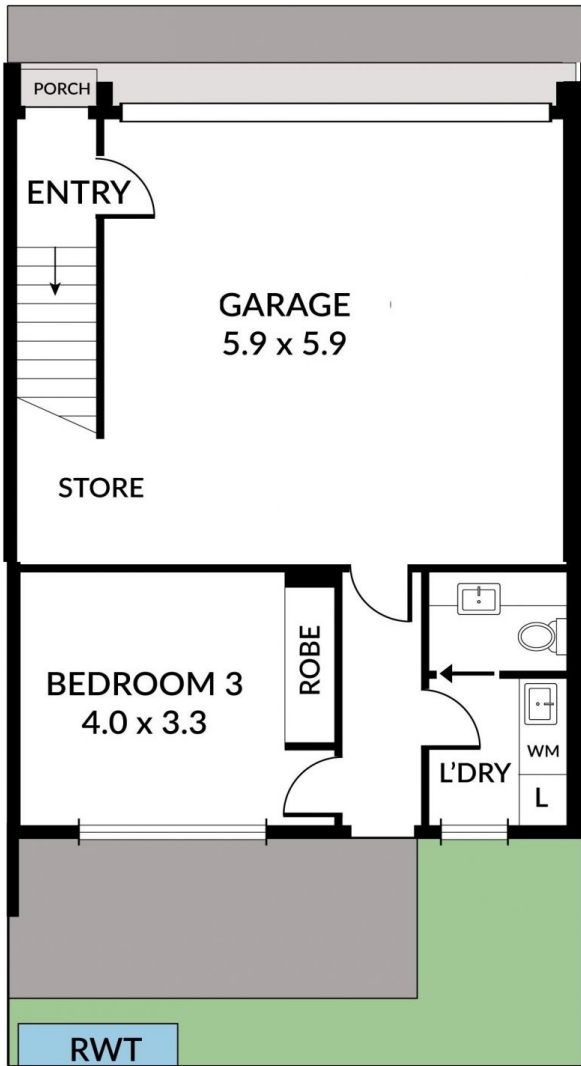
UPPER LEVEL

LOWER LIVING	30.3M <sup>2</sup>
UPPER LIVING	82.8M <sup>2</sup>
PORCH	0.5M <sup>2</sup>
GARAGE	40.0M <sup>2</sup>
BALCONY	7.9M <sup>2</sup>
<b>TOTAL</b>	<b>161.5M<sup>2</sup></b>

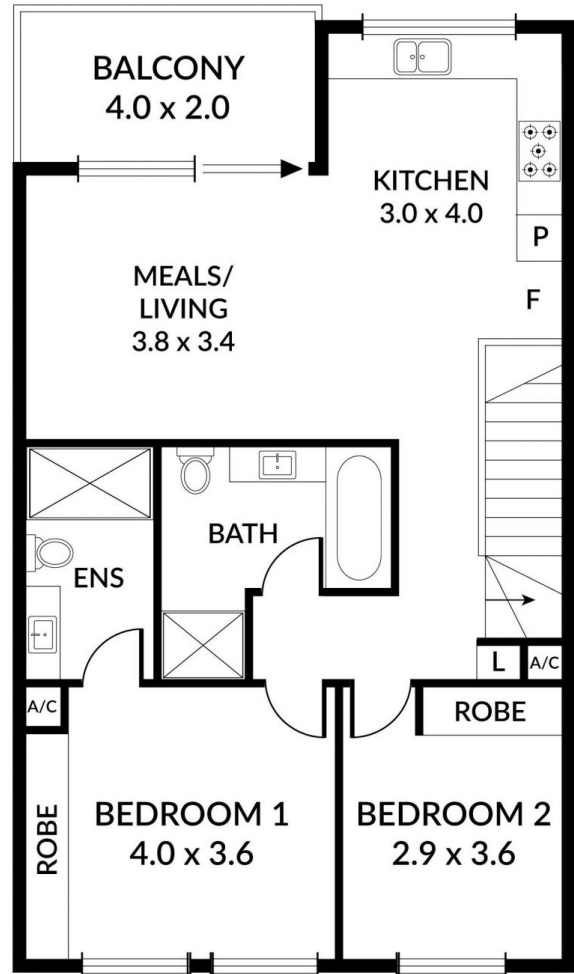


Scale in metres. Indicative only. Dimensions are approximate. All information contained herein is gathered from sources we believe to be reliable. However we cannot guarantee its accuracy and interested persons should rely on their own enquiries.

# Dwelling 4

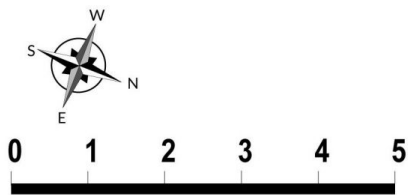


LOWER LEVEL



UPPER LEVEL

LOWER LIVING	30.3M <sup>2</sup>
UPPER LIVING	82.8M <sup>2</sup>
PORCH	0.5M <sup>2</sup>
GARAGE	40.0M <sup>2</sup>
BALCONY	7.9M <sup>2</sup>
<b>TOTAL</b>	<b>161.5M<sup>2</sup></b>



Scale in metres. Indicative only. Dimensions are approximate. All information contained herein is gathered from sources we believe to be reliable. However we cannot guarantee its accuracy and interested persons should rely on their own enquiries.