



**25B Greenbank Road Athelstone SA**

3 2 2

Do not miss the video clip of the home.

This amazing home, it was built by Dechellis Homes as a boutique design to a very high standard offering quality fixtures and fittings right throughout and offering that style of home that many buyers seeking a single level home on a compact allotment of land will absolutely love.

A great lifestyle property for many buyers from all walks of life.

The home includes an entrance area retreat which is an ideal reading room or library area depending on what your lifestyle is. It could even be a study room. The homes main bedroom suite is amazing. This suite has

**Type** : House  
**Price** : Contact Agent  
**View** : <https://www.bruse.com.au/sale/sa/north-north-east-suburbs/athelstone/residential/house/8186971>

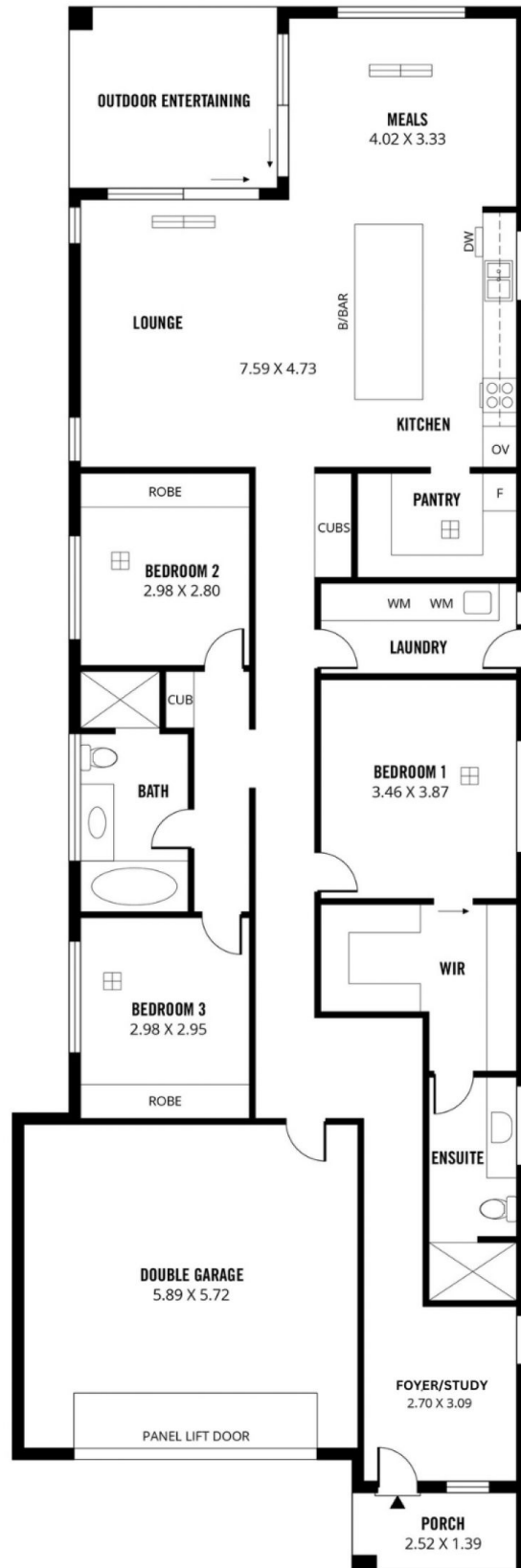


**Bevan Bruse**  
08 8431 8181



**Theon Bruse**  
08 8431 8181

[For full version visit the website](https://www.bruse.com.au)



**220m<sup>2</sup>**

**TOTAL**

168m<sup>2</sup>

Living

12m<sup>2</sup>

Outdoor  
Entertaining

36m<sup>2</sup>

Double  
Garage

4m<sup>2</sup>

Porch



Scale in metres. This drawing is for illustration purposes only. All measurements are approximate and details intended to be relied upon should be independently verified. Produced by **The Fotobase Group**

# GREENBANK ROAD

